

# ASHTON CEMETERY

## 1952 ADDITION

SCALE: 1" = 20'

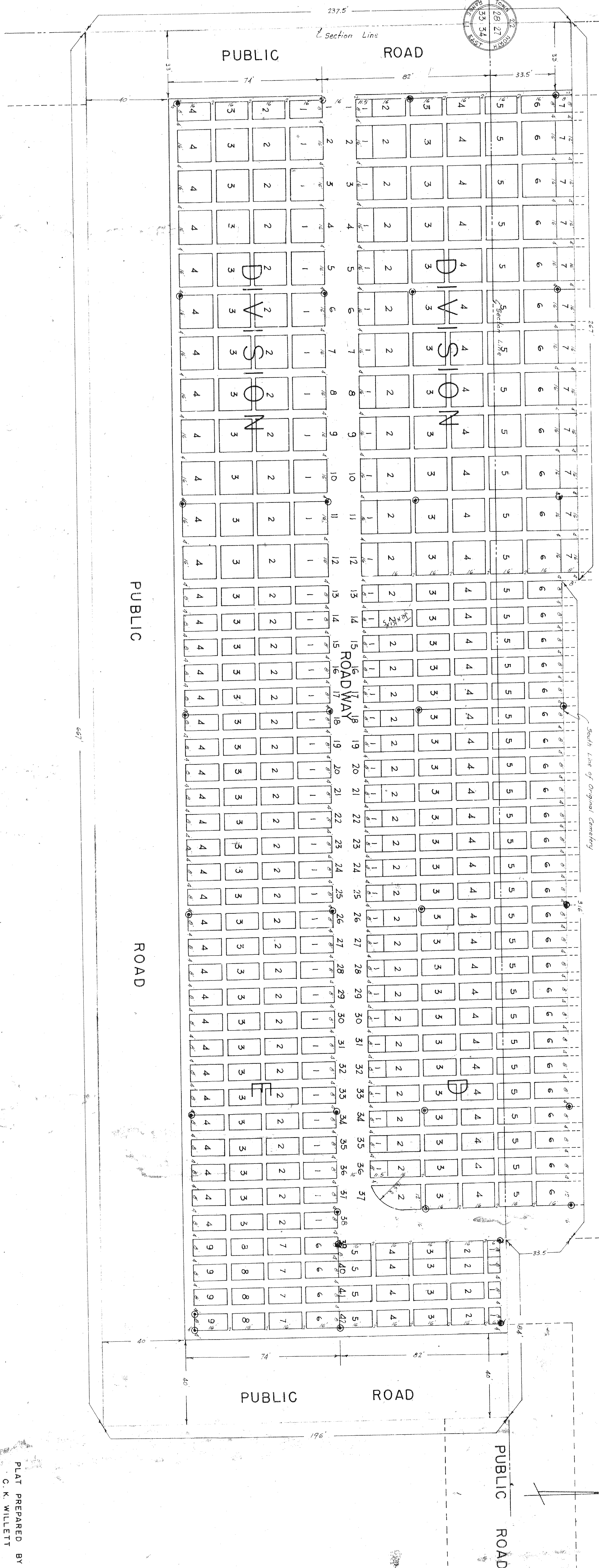
ORIGINAL

CEMETERY

**DIVISION D**  
 45 LOTS AT 15' X 16'  
 4 LOTS AT 12' X 16'  
 136 LOTS AT 8' X 16'  
 11 LOTS AT 11.5' X 16'  
 25 LOTS AT 11.5' X 8'  
 1 LOT AT 8' X 8'  
 1 LOT AT 24.5' X 12' (WITH DIAMUS 0.95)  
 TOTAL NO. OF LOTS - 233  
 NORTH - SOUTH WALKS 4' WIDE  
 EAST - WEST WALKS 2' WIDE

**DIVISION E**  
 4 LOTS AT 15' X 16'  
 149 LOTS AT 8' X 16'  
 4 LOTS AT 8' X 8'  
 TOTAL NO. OF LOTS - 168  
 NORTH - SOUTH WALKS 4' WIDE  
 EAST - WEST WALKS 2' WIDE

Set Control Points (Iron Pipes)



PLAT PREPARED BY  
 C. K. WILLETT  
 CONSULTING ENGINEERS  
 DIXON, ILLINOIS